

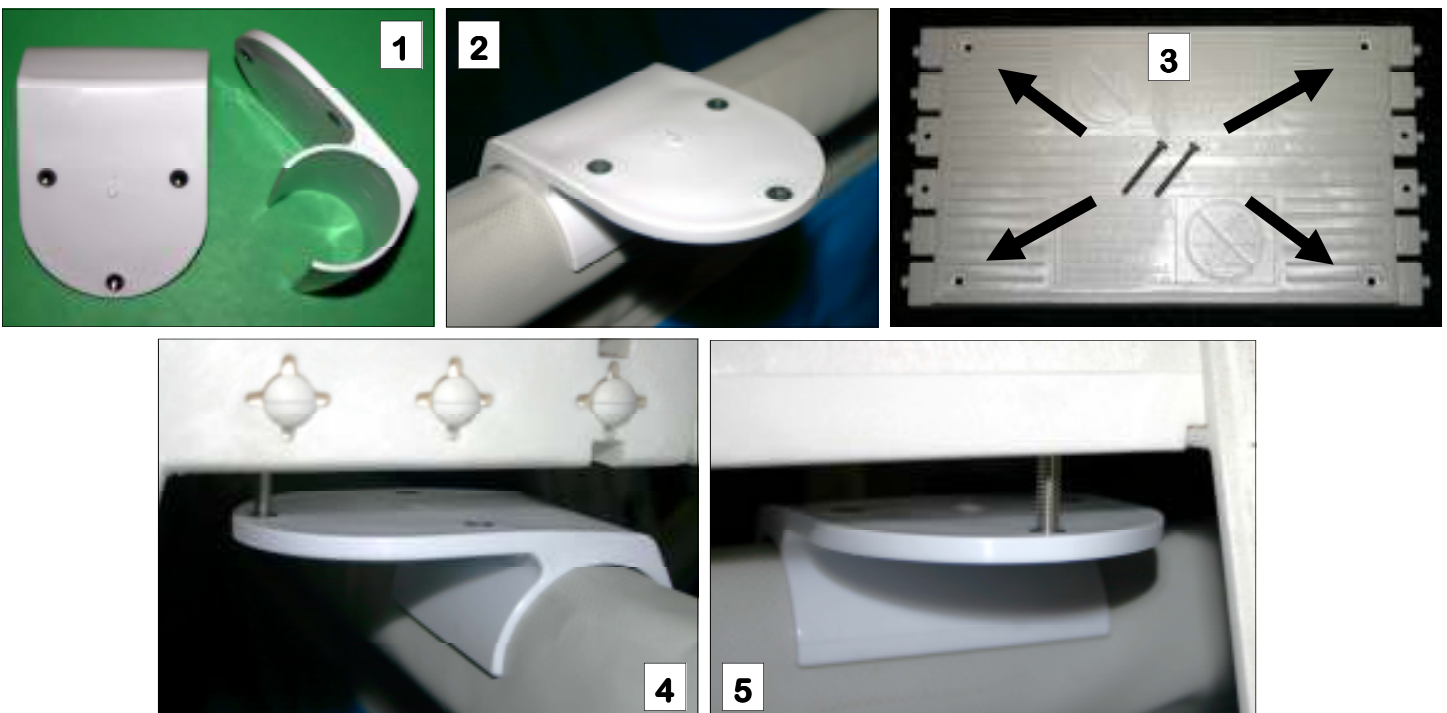
**ATTENTION:**  
**TUFF POOL & SOFT-WALL POOL CUSTOMERS**

**THIS IS AN ADDENDUM TO THE INSTRUCTIONS ENCLOSED WITH THIS SLA001-2 "SLIDE-LOCK" A-FRAME POOL LADDER. USE THE ENCLOSED LADDER BRACKET CLAMPS TO ATTACH AND SECURE THE LADDER TO THE POOL, INSTEAD OF STEP # 12 OF THE SLA001-2 A-FRAME POOL LADDER ASSEMBLY INSTRUCTIONS.**

**DO NOT DRILL OR SCREW ANYTHING  
TO THE TOP RAIL OF THE POOL**

**RECTANGLE & VIEW POOLS**

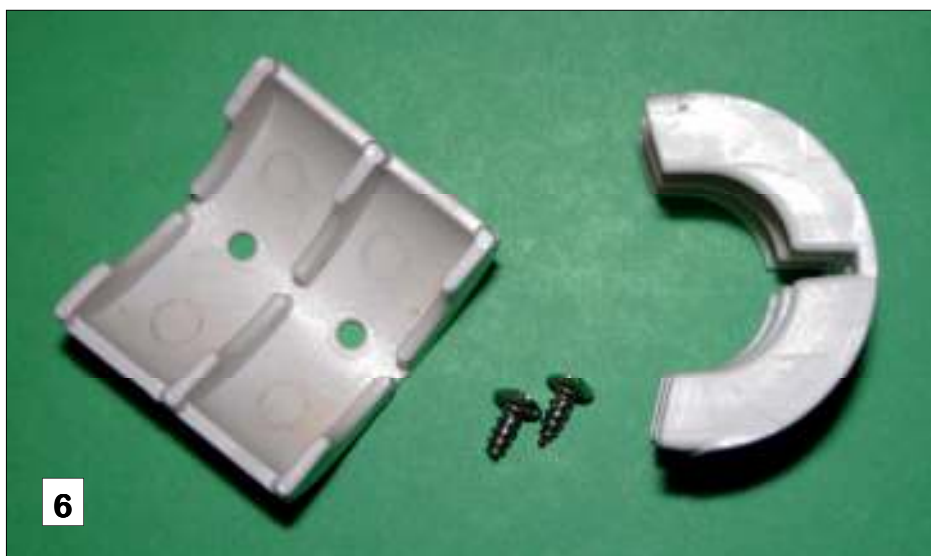
ENCLOSED ARE TWO LADDER BRACKET CLAMPS (SEE FIGURE 1), WHICH WILL SNAP DIRECTLY TO THE TOP RAIL OF THE POOL (SEE FIGURE 2). CHOOSE THE DESIRED LOCATION ON THE POOL FOR YOUR LADDER. SNAP THE TWO LADDER BRACKET CLAMPS TO THE TOP RAIL, ALIGNING THE BRACKETS WITH THE BOLT HOLES IN THE TOP PLATFORM OF THE LADDER. THE PLATFORM HAS FOUR BOLT HOLES, CHOOSE TWO THAT BEST SUIT YOUR PARTICULAR LADDER PLACEMENT AND ALIGN BRACKET CLAMPS TO THEM (SEE FIGURE 3). SIMILARLY, EACH BRACKET CLAMP HAS THREE THREADED BOLT HOLES BUT ONLY ONE IS REQUIRED PER CLAMP. USE THE BEST SUITED TO YOUR DESIRED POSITIONING OF THE LADDER. USING THE TWO 2-1/2" BOLTS SUPPLIED WITHIN THE LADDER HARDWARE, SECURE THE LADDER TO THE LADDER BRACKET CLAMPS (SEE FIGURE 4 & 5). TIGHTEN HARDWARE BUT NOT TO THE POINT THAT IT PULLS THE BRACKET CLAMP AWAY FROM THE TOP RAIL OF THE POOL. ONCE IN PLACE AND SECURE, ENSURE LADDER IS STABLE AND ON A SOLID BASE BOTH INSIDE AND OUTSIDE THE POOL.



**READ OVER AND FAMILIARIZE YOURSELF AND YOUR FAMILY WITH THE SAFETY  
INSTRUCTIONS AND PROPER USE OF THIS POOL LADDER**

## ROUND POOLS

SIMILAR TO THE INSTRUCTION FOR RECTANGULAR & VIEW POOLS, THE SAME LADDER BRACKET CLAMPS WILL BE USED FOR YOUR ROUND POOL. THE DIAMETER OF THE TOP RAIL FOR ROUND POOLS IS SMALLER THAN THE RECTANGULAR AND VIEW POOLS. HENCEFORTH, AN INSERT IS REQUIRED FOR THE LADDER BRACKET CLAMPS (SEE FIGURE 6). FIT THE INSERTS INTO THE BRACKET CLAMPS AND SECURE USING THE TWO STAINLESS SCREWS PROVIDED (SEE FIGURE 7). REPEAT INSTRUCTION FOR FITTING CLAMPS TO THE TOP RAIL OF THE POOL AND SECURING LADDER IN PROPER POSITION ON YOUR POOL. MAKE CERTAIN LADDER IS STABLE AND SECURE BEFORE USE. REMEMBER - SWIM SAFELY!



IF YOU HAVE ANY QUESTIONS REGARDING ATTACHING THE LADDER TO YOUR TUFF POOL FEEL FREE TO CALL US @ 866-939-0851